

## East Reading Horticultural Society

NEWSLETTER

March 2026

The trading shed opens: Sat and Sun 09:30 to 11:00 (but only Sat in July & August),  
and Wednesdays in April and May from 18:30 to 19:30.

**Note:** Shed helpers are not all young, big and strong so, if you need to get heavy items,  
please try to bring someone with you to help with the lifting.

Shed mobile number: 0738 463 2903. Web site: [www.erhs.org.uk](http://www.erhs.org.uk)

Facebook Group: "East Reading Horticultural Society"

Editor: Tel: 07794 233361, Email: [ERHS@hotmail.co.uk](mailto:ERHS@hotmail.co.uk)

{Get your newsletter early (and in colour): Ask to be added to the ERHS email list,  
but please include your membership card number.}



## PROGRAMME EVENTS



### TUESDAY 17<sup>TH</sup> FEBRUARY 2026

32 members attended the AGM to hear from the president, chairman and treasurer. ERHS is in a good place financially, but the chairman did raise issues about the future function of the society as the membership numbers are falling.

The business of the meeting was concluded efficiently and smoothly, and members relaxed and chatted over cheese and wine before another successful raffle was held.

### TUESDAY 17<sup>TH</sup> MARCH 2026

Our talk this month is "*Humble Hedges - Many Benefits?*" We are pleased to welcome RHS Horticultural Scientist, Dr Tijana Blanus who is team leader of the RHS environmental benefits of urban plants programme. This team are trying to understand how different plant traits and planting mixes, best combine to enhance air cooling, improve air quality and reduce rainfall run-off. Tijana will explain what makes some plants more efficient than others using garden hedges as a model. Hopefully we will look at our humble hedges in a new light after the talk. You can find more about Tijana's work here <https://www.rhs.org.uk/science/meet-the-team/environmental-horticulture-team/tijana-blanusa>

Join us in St. Peter's church hall, Church Road.  
Please come at 7:15pm for a 7:30 start.

### FRIDAY 12<sup>TH</sup> JUNE 2026

We have organised a 51-seater luxury coach to visit **Hidcote Manor**, an interesting **National Trust** property near Chipping Campden. It has a world-famous Arts and Crafts series of garden 'rooms' with the red borders and gazebos being notable features plus the bubbling fountain in the Bathing Pool. Winthrop's cafe is located in the garden serving light lunches, drinks and cakes. There is a picnic area near the car park, and the plant shop is next to the visitor centre. There is plenty to enjoy at Hidcote, so you are encouraged to book your seat(s) early.

For NT members the cost of this trip is £23 per person. For non-NT members the cost is £42 per person.

Both prices include a gratuity for the coach driver.

If you would like to book your seat(s) please contact John Peacock on 01189 867303.

Please deliver your payment (cheques payable to 'ERHS' or cash) to 9 Wychwood Close, Earley or to the trading shed. Please include your name(s) and a contact number in your envelope. Thank you.

The coach will leave from the bus stop opposite the car park of Suttons Bowling Club, Chalfont Way RG6 5HQ where you can leave your car for the day.

Please be ready to board the coach at 9:15am. The coach will leave at 9:30 and return there at 5:30pm.

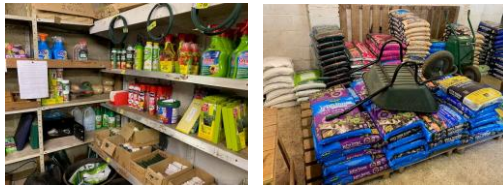
### The autumn show on Saturday 5<sup>th</sup> September

Schedules have been sent to members on the email list and put on our web site (Miscellaneous documents page.) If you are not on our email list, you can ask for a copy to be emailed to you; contact me, Neal Stockwell, on [ERHS@hotmail.co.uk](mailto:ERHS@hotmail.co.uk) and I'll send it to you as soon as I can. Copies are now in the trading shed.

### Other scheduled events 2026

Sat 5 Sept ERHS autumn show

## TRADING MATTERS



Trading shed.

We still have most varieties of potatoes in stock. We have plenty of farmyard manure and various sorts of compost available.

The rain must stop soon; we have an electric and a petrol powered scarifier, to help you remove your moss, which you can borrow from the shed. We are open Saturday, Sunday and Monday morning 9:30 to 11am and on Mondays you can have coffee and cake! Trevor Wilson

## MISCELLANEA

### Next Committee Meeting:

7:30 p.m. on Monday 13<sup>th</sup> April at the Crescent Resource Centre. (Warbler Drive, Earley, RG6 4HB)

### Shed Stewards and Assistants in March

Sun 1<sup>st</sup>

Sat 7 <sup>th</sup>	Peter Scott	Steve Willis
Sun 8 <sup>th</sup>	Kay Bridges	Cathy Harris
Sat 14 <sup>th</sup>	John Peacock	Carole Peacock
Sun 15 <sup>th</sup>	Malcolm Iosson	Viv Rimmer
Sat 21 <sup>st</sup>	Chris Dodson	Colin Green
Sun 22 <sup>nd</sup>	Kay Bridges	Ray Posselwhite
Sat 28 <sup>th</sup>	Torkill Fozzard	Tracy Minell
Sun 29 <sup>th</sup>	Phil Rogers	Peter Lynch

### Advance Notice

Membership renewal begins in early April, so the April newsletter will be your last until you renew your membership.

Currently the price remains at £3 a year. If you have a local distributor, you can renew on your doorstep (so please have your cash ready and available); otherwise, you can renew at the trading shed during normal opening hours.

### Things to do this month



1. Prepare for Spring Planting: Gear up for the upcoming spring by planning and organizing your garden. Order seeds, bulbs, and plants to ensure your garden is well-prepared for the burst of life that awaits.
2. Prune Fruit Trees: March signals the ideal time to prune fruit trees before the onset of new growth. Trim away dead or diseased branches, shaping the tree for optimal air circulation and a fruitful season.

3. Start Seedlings Indoors: Give your garden a head start by sowing seeds indoors. From tomatoes to flowers, use seed trays and quality compost to nurture seedlings that will soon grace your outdoor space.
4. Protect Against Frost: Stay vigilant against late frosts by covering tender plants with horticultural fleece or cloches. Shielding them overnight ensures their continued growth and resilience.
5. Mulching: Embrace mulching as a protective measure for your flower beds. Suppress weeds, retain soil moisture, and regulate temperature fluctuations for a thriving garden environment.
6. Pruning Shrubs: Shape the landscape by pruning late-flowering shrubs like hydrangeas and buddleia. Remove weak or dead stems to encourage robust growth in the coming months.
7. Divide Perennials: Rejuvenate overcrowded perennials by dividing and transplanting them. This thoughtful practice promotes healthier growth and more vibrant blooms.
8. Clean and Sharpen Tools: Equip yourself for efficient gardening tasks by cleaning and sharpening your tools. Well-maintained implements enhance your gardening experience and prevent the spread of diseases.
9. Plan Companion Planting: Craft your garden layout with companion planting in mind. Maximise the benefits of certain plants grown together, enhancing their growth and health.
10. Start Composting: Initiate or continue composting efforts with kitchen scraps and garden waste. Enrich your soil with nutrient-packed compost to fortify your garden's vitality.
11. Inspect Garden Structures: Survey trellises, stakes, and garden structures for damage. Repair or replace as needed, providing essential support for climbing plants and preserving the visual appeal of your garden.
12. Bird Feeding: Extend hospitality to feathered friends by providing food and water. Bird feeders and baths attract a diverse array of visitors, enhancing the lively atmosphere of your garden.
13. Inspect for Pests: Maintain vigilance against pests by checking for early signs and implementing control measures. A proactive approach safeguards your garden's health.
14. Educate Yourself: Seize the quieter gardening period to expand your knowledge. Explore new techniques, plant varieties, or sustainable practices through workshops, books, or online resources.

## WANTED / FOR SALE / FREE

Members' advertisements are free of charge. Just telephone or email the editor (see newsletter heading)

[Copy deadline for the next newsletter: Sunday 22<sup>nd</sup> March.](#)

For Sale: **SMALL TRAILER** 4ft x 3ft with cover and new spare wheel £35.00

Please contact Bob Twigg on 0748 478 3309.

*Unless otherwise stated, where items are free, a donation to the Air Ambulance (when you next visit the trading shed) would be appreciated.*

Kindly  
Printed by



MAIDEN ERLEGH  
SCHOOL